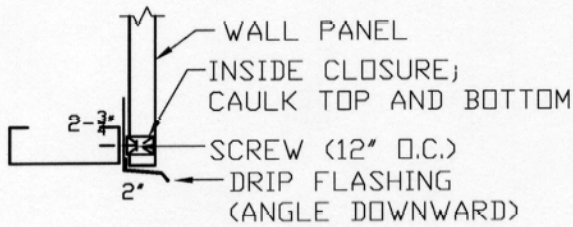
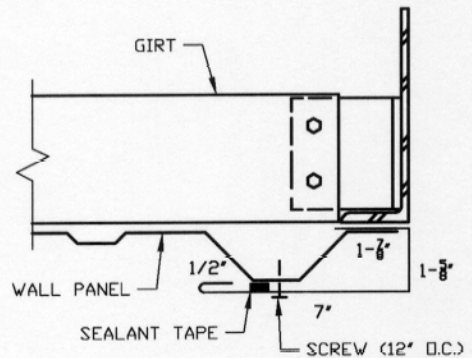


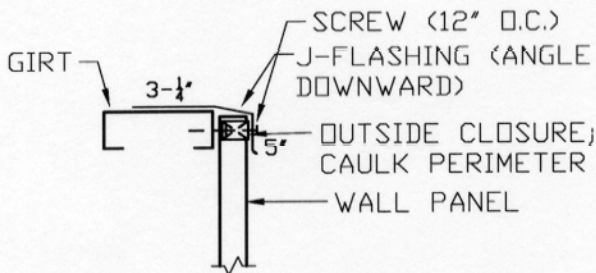
ELEVATION OF OPENING IN
SIDEWALL WITH VERTICAL
PANELS



SECTION A-A
Head Detail
Total S.O. = $8\text{-}\frac{3}{4}\text{'}$



SECTION B-B
Jamb Detail
Total S.O. = 11'



SECTION C-C
Sill Detail
Total S.O. = 11'