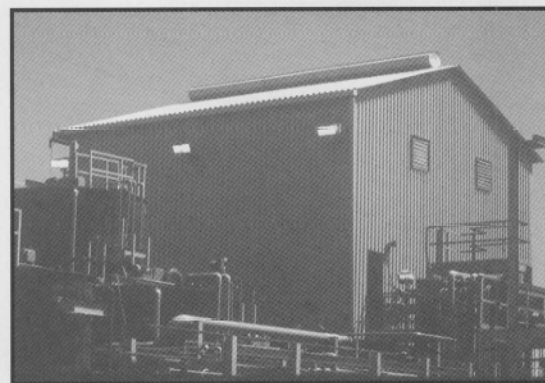
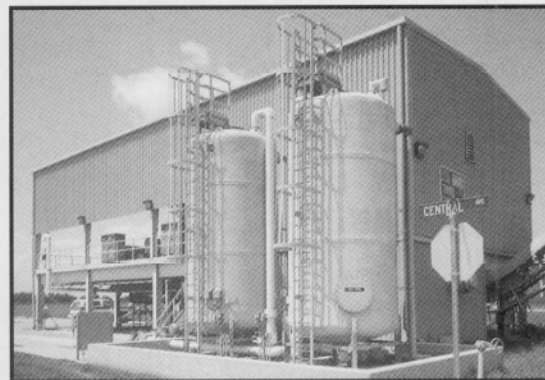


Properties

	Test Method	Series 620 Shapes Units/Value
Mechanical		
Tensile Stress, LW	D638	30,000 psi
Tensile Stress, CW	D638	7,000 psi
Tensile Modulus, LW	D638	2.5×10^6 psi
Tensile Modulus, CW	D638	$.8 \times 10^6$ psi
Compressive Stress, LW	D695	30,000 psi
Compressive Stress, CW	D695	15,000 psi
Compressive Modulus, LW	D695	2.5×10^6 psi
Compressive Modulus, CW	D695	1×10^6 psi
Flexural Stress, LW	D790	30,000 psi
Flexural Stress, CW	D790	10,000 psi
Flexural Modulus, LW	D790	1.6×10^6 psi
Flexural Modulus, CW	D790	$.8 \times 10^6$ psi
Modulus of Elasticity, Ex or Ey	full section	2.6×10^6 psi
Compressive Shear Stress, LW	D3846	3,000 psi
Shear Modulus		$.425 \times 10^6$ psi
Short Beam Shear	D2344	4,500 psi
Bearing Stress, LW	D953	30,000 psi
Poisson's Ratio, LW	D3039	.33 in/in
Notched Izod Impact, LW	D256	25 ft-lbs/in
Notched Izod Impact, CW	D256	4 ft-lbs/in
Physical		
Barcol Hardness	D253	45
24 HR Water Absorption	D570	.6 % Max by wt.
Density	D792	.070 lbs/in ³
Coefficient of Thermal Expansion	D696	4.4×10^{-6} in/in/°F
Thermal Conductivity	C177	4 BTU/ft ² /Hr/°F/in
Electrical		
Non Conductive		
Flammability *		
Flammability Classification (1/16")	UL94	VO
Tunnel Test	E-84	25 Max
NSB Smoke Chamber	E-662	650-700 (typical)
Flame Resistance (Ignition Burn Seconds)	FTMS 406-2023	55/30 (Grade 1-MIL-R-21607D)
Flammability	D635	Self Extinguishing
UL Thermal Index	Generic	130°C

LW = Lengthwise or parallel to rovings CW = Crosswise or perpendicular to laminate face
PF = Tested perpendicular to laminate face

* Fire Rated System Only



Typical CSM620 installation on chemical plants.

Specification

CSM620 Pultruded FRP Gutter System in polyester or vinyl ester resins



8059 Crile Road
Painesville, OH 44077
Phone: (216) 951-1718
1-800-321-3576
Fax: (216) 352-7048

8660 Lambright Street
Houston, Texas 77075
Phone: (713) 991-2202
1-800-229-4276
Fax: (713) 991-4747