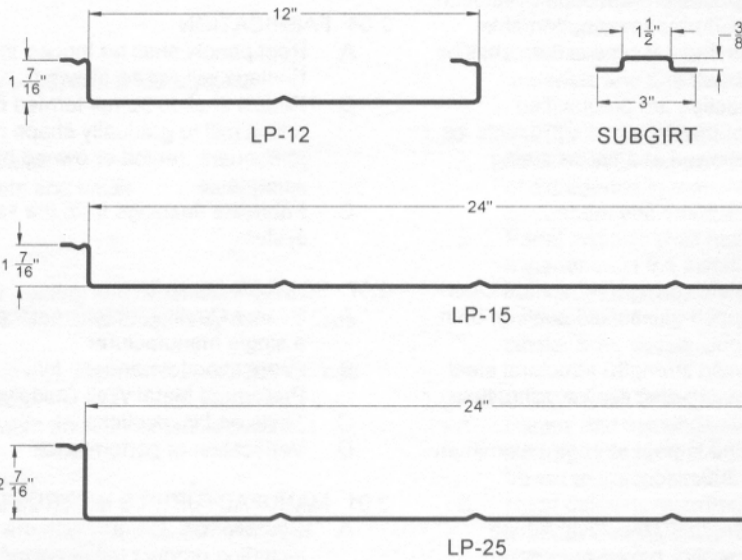


# Liner Panel

## INSULATED LINER SYSTEM



Effective August 2000



COMPONENT	GALVANIZED STEEL			ALUMINUM-ZINC ALLOY COATED STEEL			ALUMINUM		
	THICKNESS	WT./SQ. PLAIN	WT./SQ. PAINTED	THICKNESS	WT./SQ. PLAIN	WT./SQ. PAINTED	THICKNESS	WT./SQ. PLAIN	WT./SQ. PAINTED
LP-12	24 ga.	154.2 lb.	155.9 lb.	24 ga.	149.1 lb.	150.9 lb.	.032"	60.2 lb.	61.6 lb.
	22 ga.	187.5 lb.	189.3 lb.	22 ga.	182.6 lb.	184.4 lb.	.040"	75.3 lb.	76.6 lb.
	20 ga.	220.8 lb.	222.6 lb.	20 ga.	216.0 lb.	217.8 lb.	.050"	94.1 lb.	95.4 lb.
	18 ga.	287.5 lb.	289.3 lb.	18 ga.	282.9 lb.	284.7 lb.			
LP-15	24 ga.	134.9 lb.	136.4 lb.	24 ga.	130.5 lb.	132.0 lb.	.032"	52.7 lb.	53.9 lb.
	22 ga.	164.1 lb.	165.6 lb.	22 ga.	159.8 lb.	161.3 lb.	.040"	65.9 lb.	67.0 lb.
	20 ga.	193.2 lb.	194.8 lb.	20 ga.	189.0 lb.	190.6 lb.	.050"	82.3 lb.	83.5 lb.
	18 ga.	251.6 lb.	253.1 lb.	18 ga.	247.6 lb.	249.1 lb.			
LP-25	24 ga.	145.1 lb.	146.8 lb.	24 ga.	140.4 lb.	142.1 lb.	.032"	56.9 lb.	58.2 lb.
	22 ga.	176.5 lb.	178.2 lb.	22 ga.	171.9 lb.	173.5 lb.	.040"	71.2 lb.	72.4 lb.
	20 ga.	207.9 lb.	209.6 lb.	20 ga.	203.4 lb.	205.0 lb.	.050"	88.9 lb.	90.2 lb.
	18 ga.	270.7 lb.	272.3 lb.	18 ga.	266.4 lb.	268.0 lb.			
SUBGIRT	18 ga.	0.73 plf	----	----	----	----	----	----	
METAL SPECIFICATION	Grade 40 (40 ksi. yield strength) structural steel with G90 coating, both conforming to ASTM A 653			Grade 40 (40 ksi yield strength) structural steel with AZ55 coating (for plain) or AZ50 (if painted), both conforming to ASTM A 792			3004-H36 or equivalent (28 ksi yield strength) aluminum alloy conforming to ASTM B 209		

Jackson, GA (800) 884-4484  
 Lancaster, PA (800) 477-2741  
 Gridley, IL (800) 451-3974  
 Idabel, OK (800) 926-8509  
 Cedar City, UT (800) 432-2725  
 Rathdrum, ID (888) 470-0013  
 Marshfield, WI (800) 528-0878  
 Tifton, GA (800) 339-8311

Note: For load tables using these liner panels and Fabral's exterior panels, contact the Fabral Engineering Department in Lancaster, PA.